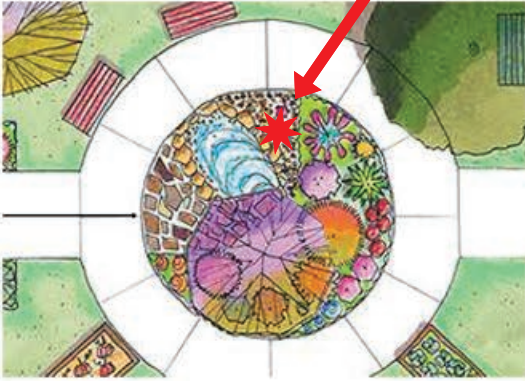


BIRDHOUSE

LOCATION:



MATERIALS

- * 4 X 8 Treated Post
- * Birdhouse
- * Shovel
- * Level
- * Wheelbarrow
- * Phillips Wood Screws
- * Phillips Screwdriver
- * 2 Bags of Cement

DIRECTIONS

1. Attach birdhouse to treated post
2. Birdhouse placement: The entryway hole should be shielded from the afternoon sun and facing the direction for the most viewing (avoid west facing entry)
3. Dig 2' hole
4. Mix 2 bags (100 lbs) of concrete in a wheelbarrow
5. Place post in hole per chosen direction and pour concrete in hole around post
6. Level post