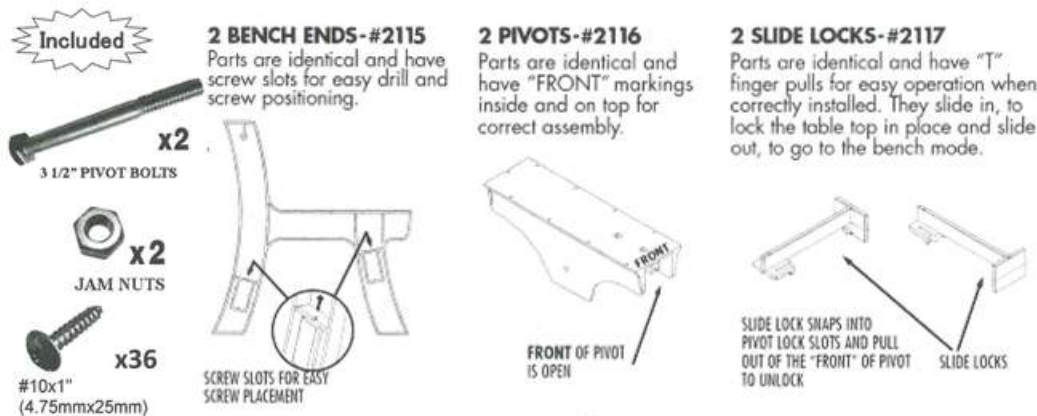


BUDDY BENCHES (FLIP TOP BENCH TABLE)

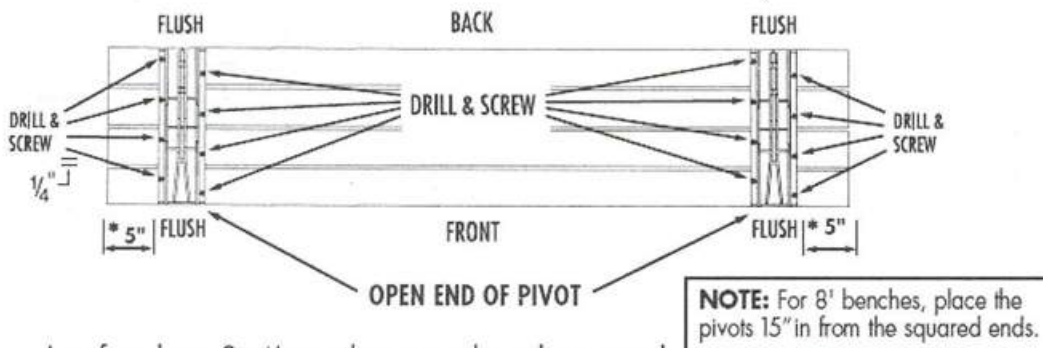
MATERIALS

- * Precut Wood (Located in Tool Shed)
- * Bench Ends, Pivots, and Slide Locks
- * Packages of Hardware
- * Drill
- * **GREEN** Paint
- * Paint Cups and Brushes
- * Drop Cloths



DIRECTIONS

1. Assemble bench back / table top



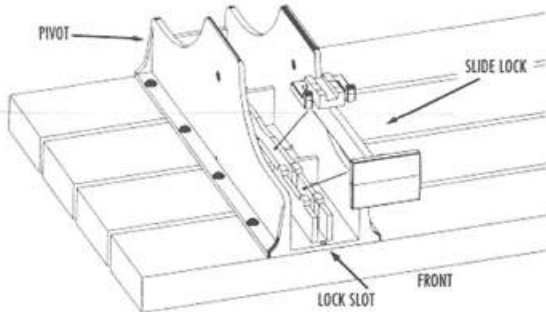
Lay four long 2x4's on the ground, ends squared.

*Place the Pivots, "FRONTS" (open end) to you, on top of the 2x4's and 5" in from the ends. Make sure the outer 2x4's are flush with the front and back of the Pivots and squared at the ends.

Space the inner 2x4's evenly (about 1/4" apart, or approximately the width of a pencil). Drill pilot holes into 2x4's through screw holes in pivots and fasten with 16 of the screws provided.

BUDDY BENCHES (FLIP TOP BENCH TABLE)

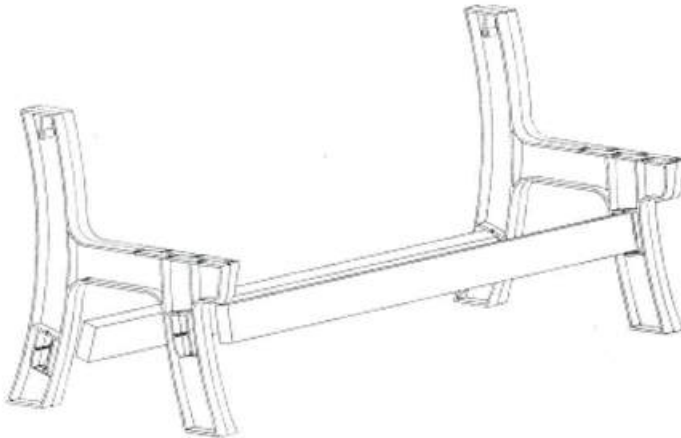
2. Slide locks into pivots



Firmly snap Slide Locks into Pivot Lock Slots. Slide Locks should slide freely in slots and close completely.

ATTENTION: IF THE PIVOTS AND SLIDE LOCKS ARE NOT CORRECTLY POSITIONED, THE CONVERTING TABLE WILL NOT WORK PROPERLY.

3. Stringer boards

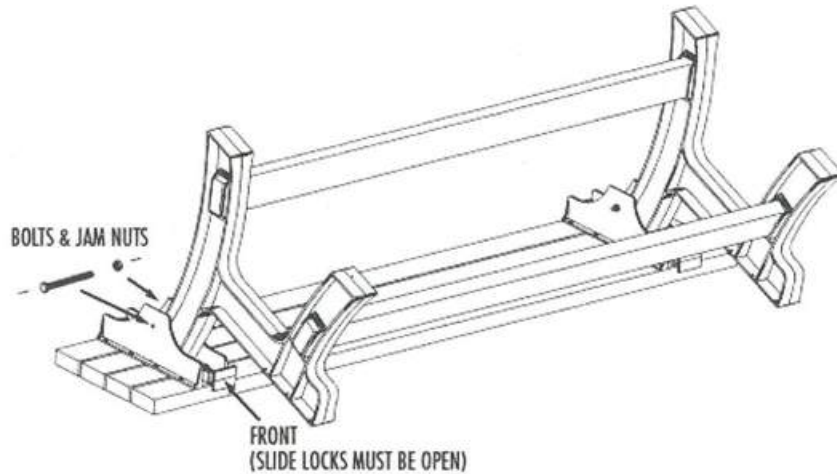


Insert the two shorter 2x4's(stringer boards) cut in Step 1 into their holes in the legs of both Bench Ends as shown. (**NOTE:** There are rounded tabs in the bottom of these holes that help to correctly position these 2x4's).

ATTENTION: DO NOT SECURE THE STRINGER BOARDS TO THE LEGS AT THIS TIME.

BUDDY BENCHES (FLIP TOP BENCH TABLE)

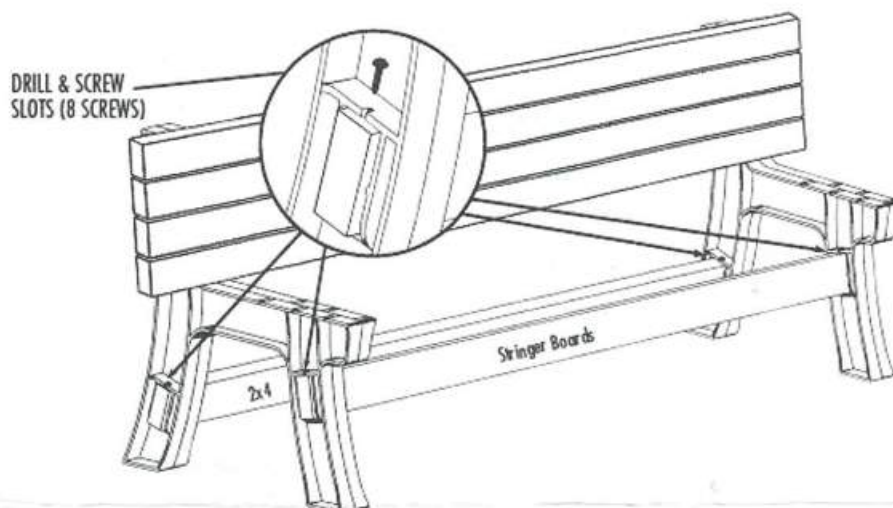
4. Mounting bench back / table top to bench ends



Make sure the **Slide Locks** are in the open position and the front (open slide lock end) is installed exactly as shown in the above Diagram!
Fit tops of Bench Ends into Pivots. Secure as shown with Pivot Bolts and Jam Nuts provided. Turn the Bench upright.

NOTE: The Jam Nuts are locking-type so they do not loosen after assembly, and will tighten with some difficulty. Use Wrenches to make certain Jam Nuts are snug in order to avoid wobble in the table top. (Do not over tighten, typically when one thread shows out of the Jam Nut, it is tightened properly.)

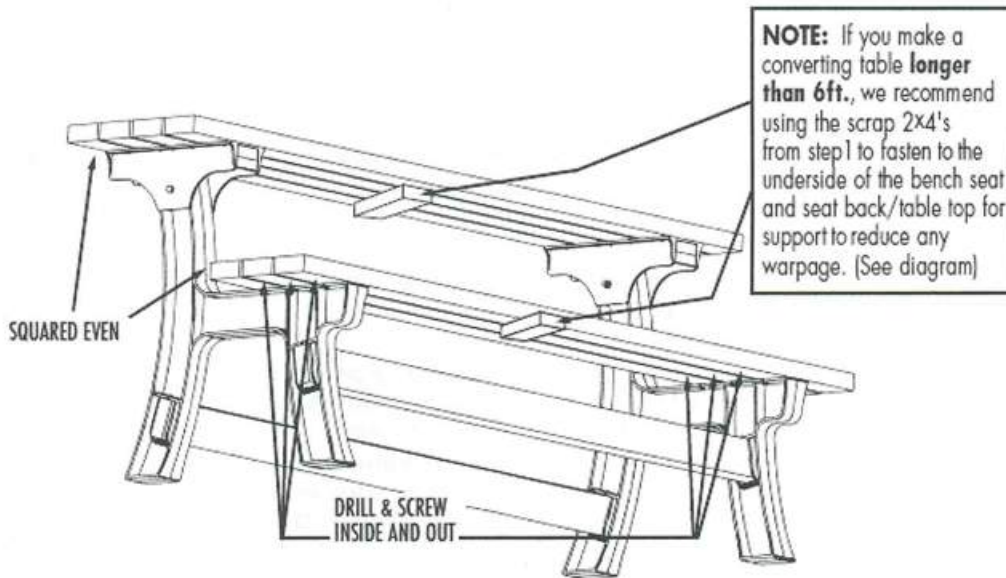
5. Fastening stringer boards



Align the ends of the stringer boards **flush to the end of the holes** in the Legs of the Bench Ends. Drill pilot holes into 2x4's at **all** of the screw slots, inside and outside, of both Legs and fasten with 8 of the screws provided.

BUDDY BENCHES (FLIP TOP BENCH TABLE)

6. Assemble the seat



To make the seat, position the first of the remaining three 2x4's at the front edge of the Bench Ends, and squared with the table top. Fasten underneath through the screw slots, inside and out, with 12 of the screws provided. Position and fasten the last (2) 2x4's, squared and spaced about $\frac{1}{4}$ " apart.

7. Paint all 2x4's (tops, bottoms, and sides) red for both benches

8. Paint designs on benches - see idea page. Benches do not need to match but should coordinate. Apply clear sealer as a final coat.



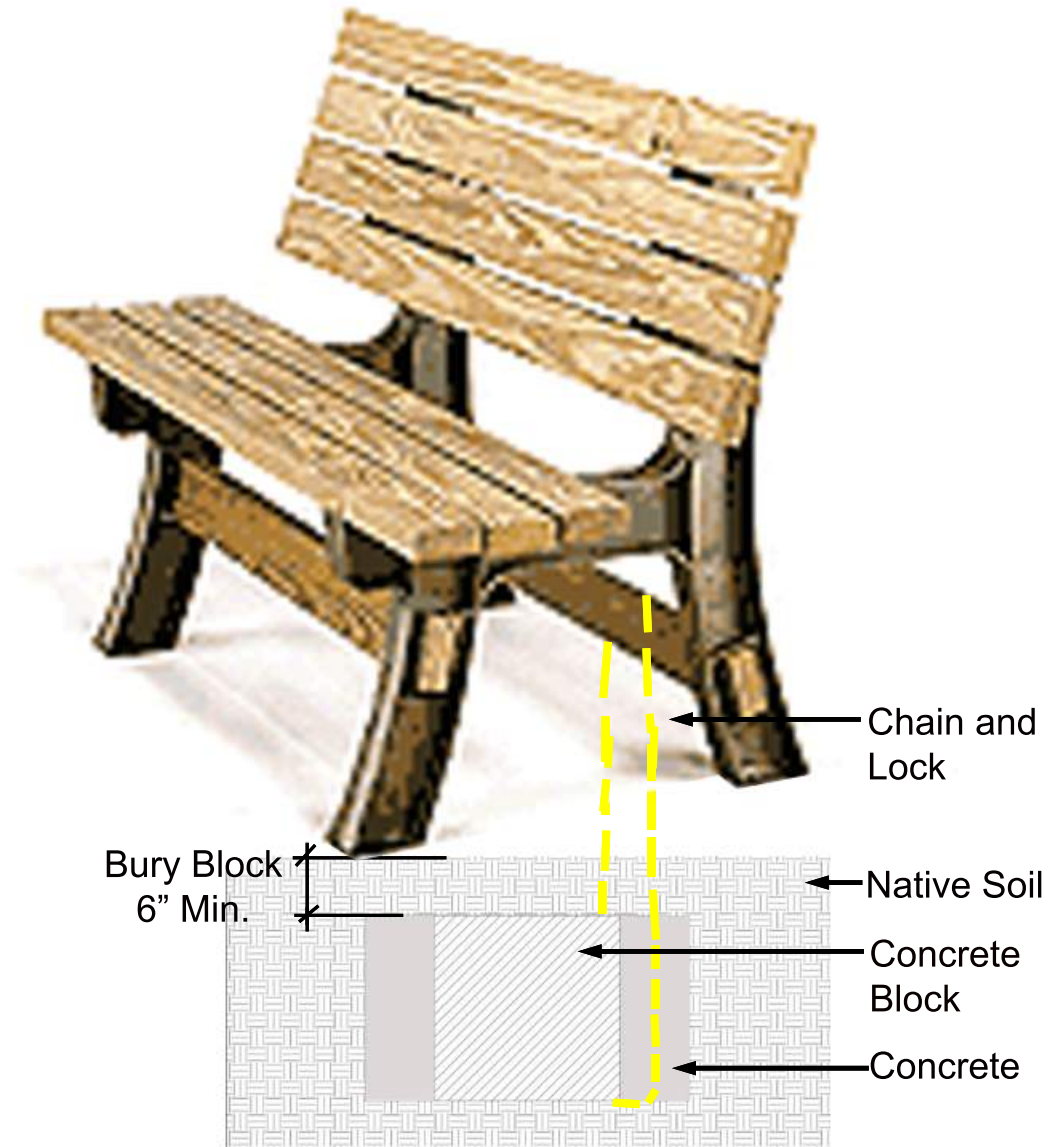
SECURING BUDDY BENCHES

MATERIALS

- * Benches
- * One Bag of Concrete per Bench
- * One Concrete Block per Bench
- * Chains
- * Locks

DIRECTIONS

1. Assemble benches per directions
2. See plan for location. Set adjacent to walk.
3. Dig hole big enough for concrete block.
Concrete block is 6" min.
existing grade.
4. Run chain through back stringer, through
concrete block and lock. Lock should be above
grade.
5. Place concrete block in hole. Hole side up.
6. Mix concrete per bag directions
and pour in concrete block and to each side.



BUDDY BENCH IDEAS

