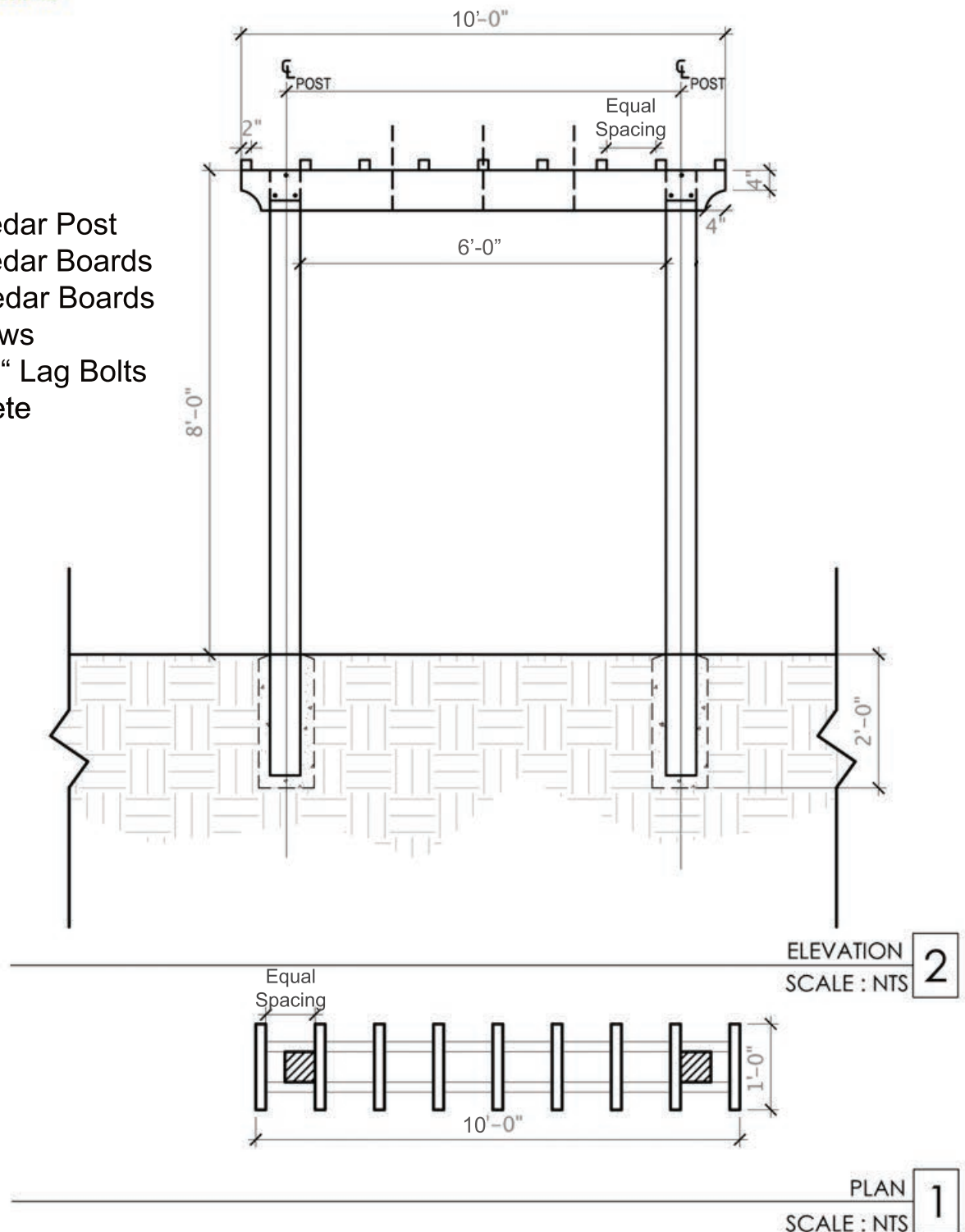


# BUILDING AN ARBOR

## MATERIALS

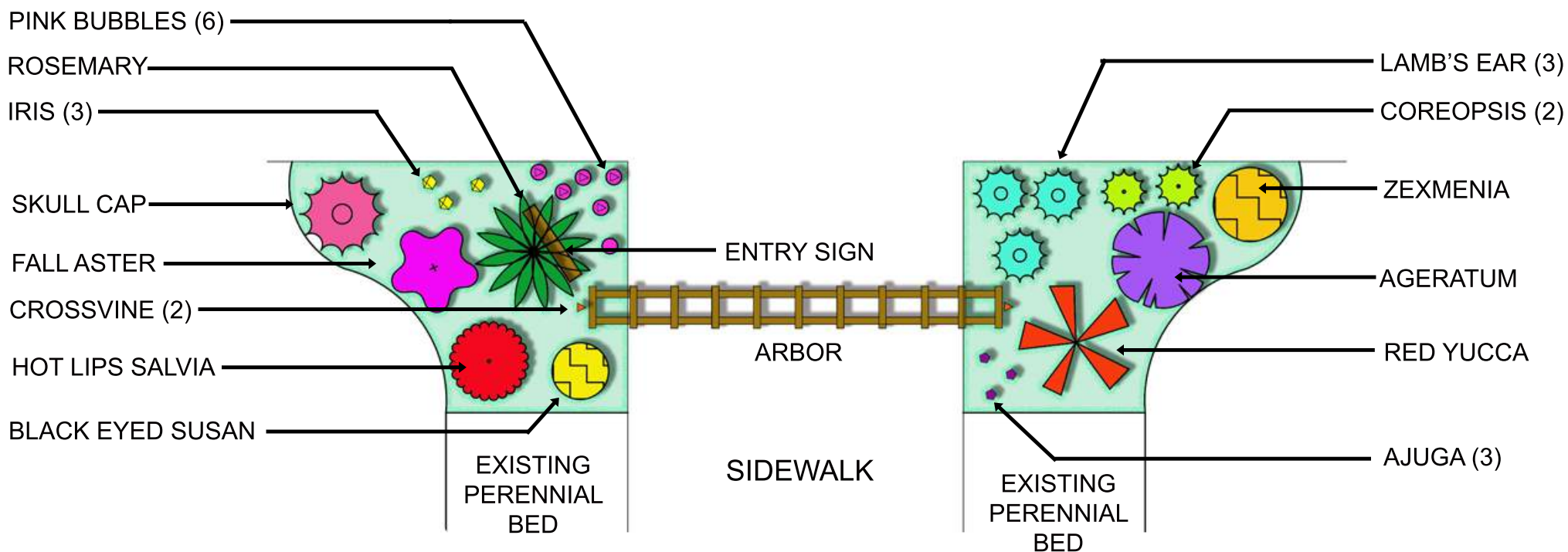
- \* 2 - 6"x6"x10' Cedar Post
- \* 2 - 2"x8"x10' Cedar Boards
- \* 11 - 2"x2"x12" Cedar Boards
- \* 3 1/2" Deck Screws
- \* 12 - 5/16" x 4 1/2" Lag Bolts
- \* 4 Bags of Concrete
- \* Level
- \* Impact Drill
- \* Screw Driver



## DIRECTIONS

1. Dig out planting bed 6"
2. Build arbor according to plan
3. Dig post holes to 2' deep
4. Raise arbor and pour concrete around each post
5. Add perennial mix and amendments
6. Till soils together
7. Plant perennials according to arbor planting plan

# PLANTING A POLLINATOR GARDEN AROUND THE ENTRY ARBOR



ATTACH VINE  
TO POST USING  
WIRE AND EYE BOLTS



## MATERIALS

- \* Perennial Mix
- \* Soils Amendments
- \* Mulch
- \* Plants
- \* Wire and Eye Hooks

## DIRECTIONS

1. Plant perennials according to the planting plan
2. Apply 2" of mulch
3. Attach Crossvines to arbor
4. Water the plants