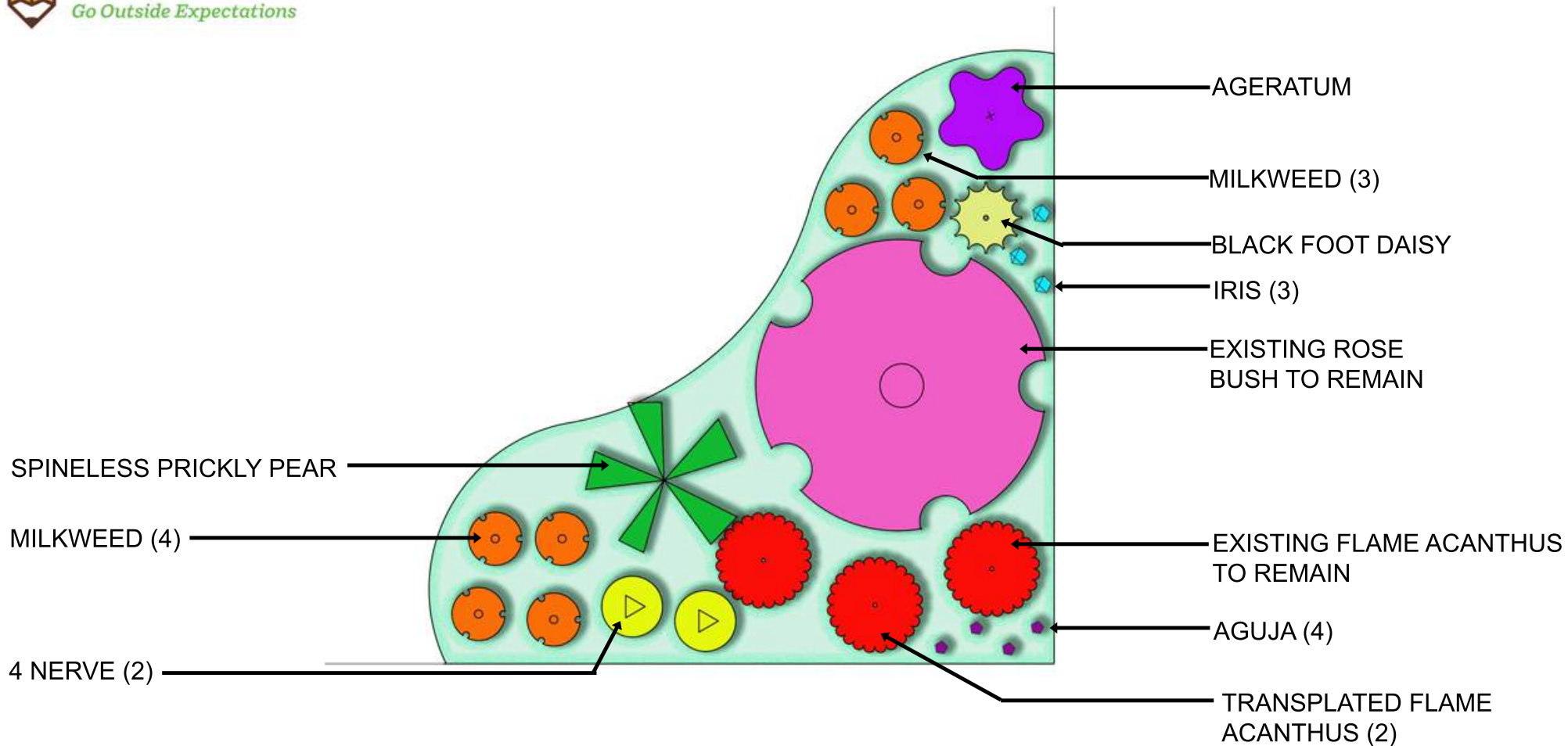


POLLINATOR PLANTING AT FENCE



MATERIALS

- * Perennial Mix
- * Soil Amendments
- * Mulch
- * Plants

DIRECTIONS

1. Dig out grass and weeds
NOTE: Leave a large diameter around existing plants
2. Dig out an additional 6" of native soil
3. Fill bed with new soil
4. Till in amendments in top 6" of soil
5. Plant perennials according to planting plan
6. Apply 2" of mulch
7. Water the plants